

August 2015



HIGH SPEED CV JOINTS

Manufacturer of Driveline Components
1500 11th Avenue Rockford, Illinois 61104
Phone (815) 962-1411 Fax (815) 965-4857

ROCKFORD DRIVELINE

Table of Contents

	<i>Page</i>
Crimping Fixtures	17-18
Flat Joint Dimensions	11
High Speed Boot Kits	13-16
High Speed CV Joints	4-11
Reference Guide	20-21
Splined Stubs	12

Notice: The data contained in this catalog has been thoroughly checked for accuracy, however we cannot assume any responsibility for errors, omissions or typographical mistakes that may appear.

All data is property of ©Rockford Drive Line and may not be duplicated or used in any way without written authorization.

HIGH SPEED CV JOINTS

Rockford's NEW "FULLY LOADED" C.V. joints are manufactured to meet the design requirements of the original equipment manufacturer. The new assembly includes our super-strength OE designed housing with precision-engineered internal components and a new boot, end cap, grease and hardware required to do the job right.

Rkfd No.

Applications Years

361-80 (Rear Joint) - Fixed Design

Jeep Grand Cherokee 1999-2004
 Jeep Liberty 2002-2007

Note: This joint appears to be the same as the 361-80D but the inner race is longer on this application.



361-80B (Front Joint) - Plunge Design

Jeep Grand Cherokee 1999-2000
 Jeep Grand Cherokee- 4.0L 2001-2004
 Jeep Liberty 2002-2007



361-80D

Dodge Dakota (4WD) 2001-2007
 Dodge Durango (4WD) 2001-2003
 Jeep Commander 2006-2010
 Jeep Grand Cherokee 2005-2006
 Jeep Grand Cherokee (Exc. 3.0L).... 2007-2010
 Mitsubishi Raider 2006-2007

Note: This joint appears to be the same as the 361-80 but the inner race is shorter on this application.



425-80 (Rear Joint)

Chrysler Town & Country (AWD) 2001-2004
 Dodge Caravan (AWD)..... 2001-2004



426-80 (Front Joint)

Buick Rendezvous (AWD) 2002-2006
 Chevy Venture (AWD) 2002-2005
 Chrysler Town & Country (AWD) 2001-2004
 Dodge Caravan (AWD)..... 2001-2004
 Oldsmobile Silhouette (AWD)..... 2002-2004
 Pontiac Aztek (AWD) 2001-2005
 Pontiac Montana (AWD)..... 2002-2005



427-80 (Pinhole Vent)

Ford Explorer 1997-2005
 Ford Ranger (4WD) 1998-2011
 Lincoln Aviator (4WD)..... 2003-2005
 Mazda B-3000 Pickup (4WD) 1998-2003
 Mazda B-4000 Pickup (4WD) 1998-2010
 Mercury Mountaineer..... 1997-2005



428-80 (Rubber Vent)

Ford Explorer 2006-2010
 Mercury Mountaineer..... 2006-2010



3 BUTTON DASH CONTROL



429-80

Chevy Blazer ¹	1998-2005
Chevy Blazer (4WD)	1995-1997
Chevy S-10 Pickup ¹	1997-2004
Chevy S-10 Pickup (4WD)	1994-1996
GMC Envoy ¹	1998-2000
GMC Jimmy ¹	1998-2005
GMC Jimmy (4WD)	1995-1997
GMC S-15 Pickup ¹	1997-2004
GMC S-15 Pickup (4WD)	1994-1996
Isuzu Hombre (4WD)	1998-2000

¹ - Application is W/Electronic Transfer Case

4 BUTTON DASH CONTROL



429-80A

Buick Rainer	2004-2007
Chevy Astro & GMC Safari	1999-2005
Chevy Blazer & GMC Jimmy ²	1998-2005
Chevy S-10 Pickup ²	1997-2004
Chevy Trailblazer	2002-2009
GMC Envoy ²	1999-2009
GMC S-15 Pickup & Sonoma ²	1997-2004
Isuzu Ascender	2003-2008
Oldsmobile Bravada	1998-2004
Saab 9-7X	2005-2006

² - Application is W/Push Button Transfer Case



435-80 (28 Tooth Inner Race)

Dodge Ram 1500 Pickup	2002-2006
Dodge Durango	2004-2006



436-80 (27 Tooth Inner Race)

Dodge Ram 1500 Pickup	2007-2011
-----------------------------	-----------

NEW APPLICATION!
NOW AVAILABLE

HIGH SPEED CV JOINTS

437-80

Chevrolet Colorado.....	2004-2012
GMC Canyon.....	2004-2012
Hummer H3.....	2006-2010
Isuzu I350.....	2006
Isuzu I370.....	2007-2008



450-80

Saturn Vue (AWD).....	2002-2003
Saturn Vue 2.2L Thru VIN 4S886739.....	2004
Saturn Vue 3.5L (AWD).....	2004-2005
Saturn Vue (AWD).....	2006-2007



450-80B

Chevy Equinox (AWD).....	2007-2011
Dodge Nitro (4x4).....	2007-2011
GMC Terrain (AWD).....	2010-2011
Jeep Liberty (4X4).....	2008-2012
Pontiac Torrent (AWD).....	2007-2009



451-80

Kia Sorento AT 3.5L (F/T 4WD).....	2003-2006
Pontiac Solstice.....	2006-2010
Saturn Sky.....	2007-2010



HIGH SPEED CV JOINTS



452-80

Chevrolet Equinox 2005-2006
Pontiac Torrent..... 2006
Saturn Vue 2.2L
From VIN 4S886740 2004-2005



454-80

Ford Escape (AWD) Exc. Hybrid) 2005-2007
Ford Escape (AWD)..... 2001-2004
Jeep Commander 2007-2010
Jeep Grand Cherokee 2007-2010
Mercury Mariner 2005-2007
Mazda Tribute..... 2001-2006



456-80 - (Fixed End)

Ford Mustang (4.6L 3V)..... 2005-2010
Ford Mustang -5.0L 2011-2014
Ford Mustang Shelby GT500-5.4L ... 2011-2012



456-80B - (Plunge End)

Ford Mustang -4.6L 3V 2005-2010
Ford Mustang -5.0L 2011-2013
Ford Mustang Shelby GT500-5.4L ... 2011-2012

457-80 - (Fixed End)

Ford Expedition	2007-2013
Ford F150 6 spd (6R80)	2009-2014
Ford F150 5.0L & 6.2L.....	2011-2014
Ford F150 Raptor	2011-2014
Lincoln Navigator.....	2007-2013



457-80B - (Plunge End)

Ford Expedition	2007-2012
Ford F150 6 spd (6R80)	2009-2013
Ford F150 5.0L & 6.2L.....	2011-2013
Ford F150 Raptor	2011-2013
Lincoln Navigator.....	2007-2012



471-80

Buick Rendezvous (AWD)	2002-2006
Chevy Venture (AWD)	2002-2005
Oldsmobile Silhouette (AWD)	2002-2004
Pontiac Aztek (AWD)	2001-2005
Pontiac Montana (AWD).....	2002-2005



475-80 - (Cross Groove- 78mm)

Volvo S40	2005-2010
Volvo S60 (With 24 Teeth)	*2002-2009
Volvo V50	2005-2010
Volvo V70 (With 24 Teeth)	*1998-2007
Volvo V70 XC (With 24 Teeth)	*2001-2007
Volvo XC90 (With 24 Teeth)	*2003-2014



***Check dimensions on page 11 to identify proper cv prior to ordering.**

HIGH SPEED CV JOINTS



476-80 - (Cross Groove- 86mm)

Volvo S60 (With 19 Teeth)	*2002-2009
Volvo S70 (With 19 Teeth)	*1998-2000
Volvo S80 (Plunging End).....	*2007-2011
Volvo V70 (Plunging End).....	*2008-2010
Volvo V70 (With 19 Teeth)	*1998-2007
Volvo V70 XC (With 19 Teeth)	*1998-2007
Volvo XC70 (Plunging End)	*2008-2011
Volvo XC90 (With 19 Teeth)	*2003-2014

****Check dimensions on page 11 to identify proper cv prior to ordering.***

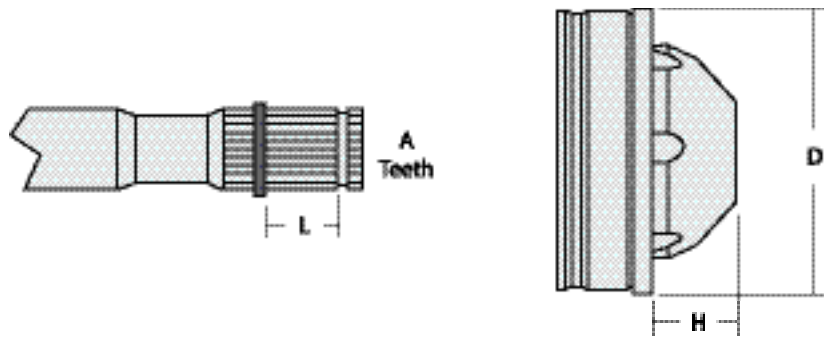


477-80 - (Rzeppa- 86mm)

Volvo S60	2011-2012
Volvo S80 (Fixed End).....	*2007-2012
Volvo S80L.....	2008-2013
Volvo V60	2011-2012
Volvo V70 (Fixed End).....	*2008-2012
Volvo XC60.....	2009-2012
Volvo XC70 (Fixed End)	*2008-2012

****Check dimensions below to identify proper cv prior to ordering.***

Flat Joint Dimensions



Part No.	Housing OD Outside Dia. D	Number of Teeth A	Spline / Race Length L	Mounting Depth H	Design
361-80	100mm	25T	0.950	0.520	Rzeppa
361-80B	100mm	25T	1.655	1.390	Cross Groove
361-80D	100mm	25T	0.906	0.520	Rzeppa
363-80	100mm	35T	1.078	0.328	Rzeppa
424-80	100mm	25T	1.315	1.055	Cross Groove
425-80	100mm	25T	1.230	1.055	Cross Groove
426-80	86mm	21T		0.480	Rzeppa
427-80	107mm	27T	1.287	1.200	Cross Groove
428-80	107mm	26T	1.290	1.200	Cross Groove
450-80	100mm	30T	1.481	1.390	Cross Groove
450-80B	100mm	30T	1.481	1.390	Cross Groove
451-80	94mm	24T	0.946	0.640	Cross Groove
452-80	85mm	25T	1.143	1.290	Cross Groove
454-80	100mm	26T	1.532	1.370	Cross Groove
456-80	112mm	30T	1.115	0.600	Rzeppa
456-80B	119mm	30T	1.380	1.094	Cross Groove
457-80	108mm	28T	1.048	0.325	Rzeppa
457-80B	114mm	28T	1.458	1.340	Cross Groove
471-80	100mm	25T	1.655	1.055	Cross Groove
475-80	78mm	24T	0.825	0.615	Cross Groove
476-80	86mm	19T	1.025	0.583	Cross Groove
477-80	86mm	19T	0.745	0.583	Rzeppa

REPLACEMENT SPLINES FOR HIGH SPEED CV JOINTS



RDL Part Number	Tooth Count	Fits Tube Dia/Wall	Butt Diameter	End of Spline to Weld
361-31	25T/1.075	OEM	1.615	4.750*
361-31A	25T/1.075	2.000 / .120	1.765	4.250
361-31B	25T/1.075	OEM	1.615	8.875*
361-31C	25T/1.075	2.000 / .120	1.765	8.375
361-31D	25T/1.075	OEM	1.788	4.750*
361-31E	25T/1.075	2.000 / .120	1.765	4.250
363-31	35T/1.091	3.000 / .065	2.878	5.063
363-31A	35T/1.091	3.000 / .083	2.842	4.563
421-31	22T/0.995	2.000 / .120	1.765	4.375
421-31A	22T/0.995	1.250 / .189	0.890	4.375
426-31	<i>Under development - Check with sales for availability</i>			
427-31	26T/1.125	2.000 / .120	1.765	4.875
429-31	22T/0.995	2.000 / .083	1.850	4.375
435-31	28T/1.195	OEM	2.215	5.188*
435-31A	28T/1.195	2.500 / .083	2.344	4.750
437-31	34T/1.085	2.000 / .065	1.889	4.500
437-31A	34T-1.085	2.000 / .120	1.765	4.538
450-31	30T/0.962	OEM	1.716	7.500*
450-31A	30T/0.962	2.000 / .120	1.765	7.250
452-31	25T/0.776	OEM	1.719	7.125*
452-31A	25T/0.776	2.000 / .120	1.765	6.406
454-31	26T/1.125	2.500 / .065	2.378	7.250
457-31	28T/1.135	1.775 / .090	1.602	5.125*
457-31A	28T/1.135	2.000 / .120	1.765	4.625
457-31B	28T/1.135	1.775 / .090	1.602	5.875*
457-31C	28T/1.135	2.000 / .120	1.765	5.375

* Stub made 1/2" longer then OEM to allow for cut off

HIGH SPEED BOOT KITS

Over the years a number of original equipment manufacturers have introduced drive-shafts that incorporate cage & ball or cross groove constant velocity joint technology. According to many of these manufactures, these driveshafts are non-repairable and no replacement components are available. Rockford supplies **HIGH SPEED BOOTS** for a majority of these “non-repairable” applications.

Boot Kits include:

1-Boot Assembly, End Cap, Grease, Installation Instructions & Any Misc. Hardware Required.

THE INDUSTRY’S BROADEST COVERAGE

Kit Number	Application	Year
320-21C	BMW 525i	1989-1992
	BMW 533i	1983-1984
	BMW 535i	1985-1992
	BMW 635Csi.....	1983-1986
	BMW 735iL.....	1989-1991
361-21*	Dodge Dakota (4WD).....	2001-2007
	Dodge Durango (4WD)	2001-2003
	Jeep Commander (4WD).....	2007-2010
	Jeep Grand Cherokee (4WD)	1999-2010
	Jeep Liberty- (Rear Joint)- Fixed Design	2002-2007
	Mitsubishi Raider (4WD).....	2006-2007
361-21B*	Jeep Grand Cherokee (4WD)	1999-2004
	Jeep Liberty- (Front Joint)- Plunge Design	2002-2007
361-21D	(Replaced with 361-21)	
363-21	Jeep Wrangler (8 Hole CV).....	2007-2013
	Jeep Wrangler Rubicon 3.8L (8 Hole CV).....	2007-2013
419-21	Chevrolet Astro Van (AWD).....	1990-1991
	Ford Bronco II (Exc. 6/89-90 2WD)	1985-1990
	GMC Safari Van (AWD)	1990-1991
	Jeep Cherokee.....	1984-1987
	Jeep Wagoneer.....	1984-1987
419-21A	GMC Syclone.....	1991-1993
	GMC Typhoon.....	1991-1993
420-21	Ford Bronco II 2WD (6/89-up).....	1989-1990

*Crimping Fixture is available but not required to service these kits (see pgs 13-14)

THE INDUSTRY'S BROADEST COVERAGE

Kit Number	Application	Year
421-21*	Chevrolet Astro Van (AWD).....	1992-1998
	Chevrolet Blazer (AWD).....	1995-1997
	GMC Jimmy (AWD).....	1995-1997
	GMC Safari Van (AWD)	1992-1998
	Pontiac 6000 (AWD)	1988-1990
	Oldsmobile Bravada.....	1991-1997
421-21C	Chevrolet Camaro V6 (check stock, discontinuing when gone).	1993-2002
	Pontiac Firebird V6	1993-2002
424-21*	Buick Rendezvous (AWD)- (Rear CV) Large	2002-2006
	Chevy Venture (AWD)- (Rear CV) Large	2002-2005
	Chrysler Town & Country (AWD)- (Rear CV) Large	2001-2004
	Dodge Caravan (AWD)- (Rear CV) Large	2001-2004
	Jeep Grand Cherokee Auto Trans	1993-1998
	Oldsmobile Silhouette (AWD)- (Rear CV) Large.....	2002-2004
	Pontiac Aztek (AWD)- (Rear CV) Large	2001-2005
	Pontiac Montana (AWD)- (Rear CV) Large.....	2002-2005
426-21*	Buick Rendezvous (AWD)- (Front CV) Small Rzeppa	2002-2006
	Chevy Venture (AWD)- (Front CV) Small Rzeppa	2002-2005
	Chrysler Town & Country (AWD)- (Front CV) Small Rzeppa	2001-2004
	Dodge Caravan (AWD)- (Front CV) Small Rzeppa.....	2001-2004
	Oldsmobile Silhouette (AWD)- (Front CV) Small Rzeppa	2002-2004
	Pontiac Aztek (AWD)- (Front CV) Small Rzeppa	2001-2005
	Pontiac Montana (AWD)- (Front CV) Small Rzeppa	2002-2005
427-21A	Ford Explorer (4WD).....	1997-2010
	Ford Ranger (4WD)	1998-2011
	Lincoln Aviator (4WD)	2003-2005
	Mazda B-3000 Pickup (4WD)	1998-2003
	Mazda B-4000 Pickup (4WD)	1998-2010
	Mercury Mountaineer (4WD).....	1997-2010
429-21*	Buick Rainer.....	2004-2007
	Chevrolet Astro Van (AWD).....	1999-2005
	Chevrolet Blazer (4WD).....	1995-2005
	Chevrolet Trailblazer	2002-2009
	Chevrolet S-10 Pickup (4WD).....	1994-2004
	GMC Envoy.....	1998-2009
	GMC Jimmy (4WD).....	1995-2005
	GMC Safari Van	1999-2005
	GMC S-15 Pickup (4WD).....	1994-2004
	Isuzu Ascender (4WD).....	2003-2008
	Isuzu Hombre (4WD)	1998-2000
	Oldsmobile Bravada (4WD)	1998-2004
	Saab 9-7X.....	2005-2006

*Crimping Fixture is available but not required to service these kits (see pgs 13-14)

THE INDUSTRY'S BROADEST COVERAGE

Kit Number	Application	Year
435-21*	Dodge Ram 1500 Pickup	2002-2006
	Dodge Durango.....	2004-2006
436-21*	Dodge Ram 1500.....	2007-2011
437-21*	Chevrolet Colorado	2004-2012
	GMC Canyon	2004-2012
	Hummer H3.....	2006-2010
	Isuzu I350	2006
	Isuzu I370	2007-2008
450-21*	Saturn Vue (AWD)	2002-2003
	Saturn Vue 2.2L Thru VIN 4S886739	2004
	Saturn Vue 3.5L (AWD).....	2004-2005
	Saturn Vue (AWD)	2006-2007
450-21B	Chevrolet Equinox (AWD Rear)	2007-2011
	GMC Terrain (AWD Rear)	2010-2011
	Jeep Liberty (4WD Front).....	2008-2012
	Pontiac Torrent (AWD Rear)	2007-2009
451-21	Kia Sorento AT 3.5L (Full Time 4WD)	2003-2006
	Pontiac Solstice	2006-2010
	Saturn Sky	2007-2010
452-21*	Chevrolet Equinox.....	2005-2006
	Pontiac Torrent.....	2006
	Saturn Vue 2.2L From VIN 4S886740	2004-2005
454-21*	Ford Escape (AWD).....	2001-2007
	Jeep Commander	2007-2010
	Jeep Grand Cherokee.....	2007-2010
	Mercury Mariner (AWD)	2005-2007
	Mazda Tribute	2001-2006
456-21	Ford Mustang (4.6L 3V)- Fixed End.....	2005-2010
	Ford Mustang (5.0L)- Fixed End.....	2011-2013
	Ford Mustang Shelby GT 500 (5.4L)- Fixed End	2011-2012
456-21B	Ford Mustang (4.6L 3V)- Plunge End	2005-2010
	Ford Mustang (5.0L)- Plunge End.....	2011-2013
	Ford Mustang Shelby GT 500 (5.4L)- Plunge End.....	2011-2012
457-21	Ford Expedition- Fixed End	2007-2012
	Ford F150 5.0L & 6.2L- Fixed End.....	2010-2013
	Ford F150 6 Spd (6R80)- Fixed End.....	2009-2013
	Ford F150 Raptor- Fixed End	2010-2013

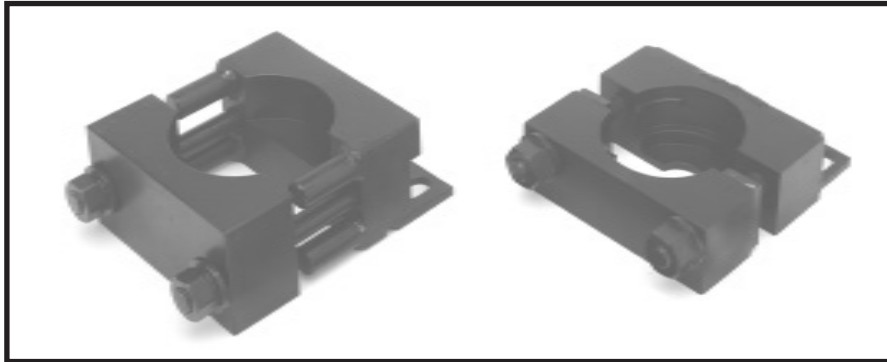
*Crimping Fixture is available but not required to service these kits (see pgs 13-14)

THE INDUSTRY'S BROADEST COVERAGE

Kit Number	Application	Year
457-21B	Ford Expedition- Plunge End	2007-2012
	Ford F150 5.0L & 6.2L- Plunge End	2010-2013
	Ford F150 6 Spd (6R80)- Plunge End	2009-2013
	Ford F150 Raptor- Plunge End	2010-2013
	Lincoln Navigator- Plunge End	2007-2012
804-21*	BMW 735i (Stud Style CV).....	1987-1992
	BMW 735iL (Stud Style CV).....	1988-1989
	BMW 750iL (Stud Style CV).....	1988-1991
	BMW M5 (Stud Style CV)	1991
804-21C	BMW 735i (Thru-Bolt Style CV)	1987-1992
	BMW 735iL (Thru-Bolt Style CV)	1988-1989
	BMW 750iL (Thru-Bolt Style CV)	1988-1991
	BMW M5 (Thru-Bolt Style CV).....	1991
	Porsche Cayenne	2003-2010
	Volkswagen Touareg.....	2004-2008
805-21A	Mazda MPV	1989-1991
	Subaru SVX	1992-1993
806-21A	Discontinued (No longer offered)	
808-21A	Nissan 300ZX Twin Turbo	1990-1996
	BMW 740i W/ E32 Body Style	1993-1994
	BMW 740iL W/ E32 Body Style	1993-1994

HIGH SPEED BOOT CRIMPING FIXTURES

Rockford now offers a wide selection of fixtures that will professionally crimp high speed DURA-BOOTS onto the original equipment housing. Each fixture assures you of a positive seal that keeps lubricants in and contaminants out.



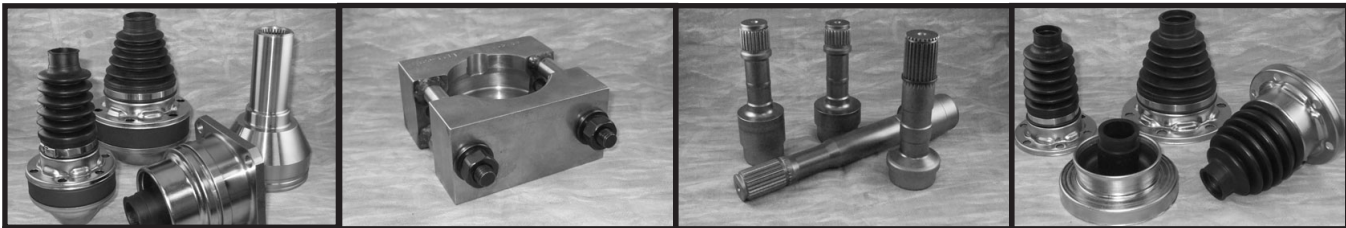
Crimping Fixture	Boot Kit Number	Applications	Years
100-14TG	421-21	Chevrolet Astro Van (AWD).....	1992-1998
		Chevrolet Blazer (AWD).....	1995-1997
		GMC Jimmy (AWD).....	1995-1997
		GMC Safari Van (AWD).....	1992-1998
		Pontiac 6000 (AWD).....	1989-1990
		Oldsmobile Bravada.....	1991-1997
100-14TN	804-21	BMW 735i (Stud Style CV).....	1987-1992
		BMW 735iL (Stud Style CV).....	1988-1989
		BMW 750iL (Stud Style CV).....	1988-1991
		BMW M5 (Stud Style CV).....	1991
100-14TO	424-21	Chrysler Town & Country (AWD)- Plunging Joint.....	2001-2004
		Dodge Caravan (AWD)- Plunging Joint.....	2001-2004
		Jeep Grand Cherokee Auto Trans.....	1993-1998
<u><i>Crimps the boot flange & end cap in one step</i></u>			
100-14TP	429-21	Buick Rainer.....	2004-2007
		Chevrolet Astro Van (AWD).....	1999-2005
		Chevrolet Blazer (4WD).....	1995-2005
		Chevrolet Trailblazer.....	2002-2009
		Chevrolet S-10 Pickup (4WD).....	1994-2004
		GMC Envoy.....	1998-2009
		GMC Jimmy (4WD).....	1995-2005
		GMC Safari Van.....	1999-2005
		GMC S-15 Pickup (4WD).....	1994-2004
		Isuzu Ascender (4WD).....	2003-2008
		Isuzu Hombre (4WD).....	1998-2000
Oldsmobile Bravada (4WD).....	1998-2004		
Saab 9-7X.....	2005-2006		
100-14TQ	361-21	Jeep Grand Cherokee.....	1999-2004
		Jeep Liberty- (Rear Joint)- Fixed Design.....	2002-2007
		<u><i>Crimps the boot flange & end cap in one step</i></u>	

HIGH SPEED BOOT CRIMPING FIXTURES

Crimping Fixture	Boot Kit Number	Applications	Years
100-14TQ	361-21D	Dodge Dakota (4WD).....	2001-2007
		Dodge Durango (4WD).....	2001-2003
		Jeep Commander (4WD)	2007-2010
		Jeep Grand Cherokee (4WD).....	2005-2010
		Mitsubishi Raider (4WD)	2006-2007
<u><i>Crimps the boot flange & end cap in one step</i></u>			
100-14TR	361-21B	Jeep Grand Cherokee (4WD).....	1999-2004
		Jeep Liberty- (Front Joint)- Plunge Design.....	2002-2007
<u><i>Crimps the boot flange & end cap in one step</i></u>			
100-14TS	437-21	Chevrolet Colorado	2004-2011
		GMC Canyon.....	2004-2011
		Hummer H3	2006-2010
		Isuzu I350.....	2006
		Isuzu I370.....	2007-2008
100-14TT	435-21	Dodge Ram 1500 Pickup	2002-2006
		Dodge Durango	2004-2006
100-14TU	450-21	Saturn Vue (AWD).....	2002-2003
		Saturn Vue 2.2L Thru VIN 4S886739	2004
		Saturn Vue 3.5L (AWD)	2004-2005
		Saturn Vue (AWD).....	2006-2007
100-14TV	452-21	Chevrolet Equinox	2005-2006
		Pontiac Torrent	2006
		Saturn Vue 2.2L From VIN 4S886740	2004-2005
100-14TW	454-21	Ford Escape	2001-2007
		Mercury Mariner	2005-2007
		Mazda Tribute.....	2001-2006
100-14TX	436-21	Dodge Ram 1500 Pickup - 8 Ball CV Joint.....	2007-up
100-14TZ	363-80	Jeep JK Wrangler.....	2007-2013

REFERENCE GUIDE

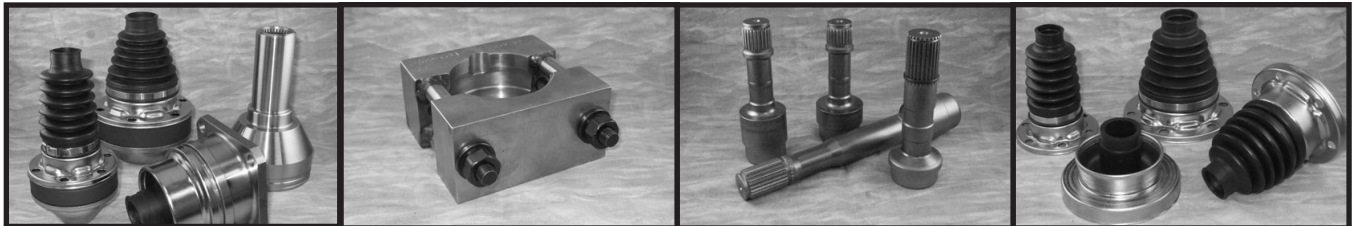
A handy guide for you to use when looking for the crimping fixture needed for a High Speed CV Joint or Boot Kit. Use it for finding what Boot Kit is used for a CV Joint or even when you want to know what spline to use when making a driveshaft assembly.



High Speed CV Joint Kits	Crimping Fixtures	Replacement Splines	High Speed CV Boot Kits
***	***	***	320-21C
361-80	100-14TQ	361-31 361-31A	361-21
361-80B	100-14TR	361-31B 361-31C	361-21B
361-80D	100-14TQ	361-31D 361-31E	361-21
363-80	100-14TZ	363-31 363-31A	363-21
***	***	***	419-21
***	***	***	419-21A
***	***	***	420-21
421-80	100-14TG	421-31 421-31A	421-21
421-80C	***	421-31C	421-21C
424-80	100-14TO	***	424-21
425-80			424-21
426-80		426-31	426-21
427-80	***	427-31	427-21A
428-80		428-31 428-31A	427-21A
429-80	100-14TP	429-31	429-21
429-80A	100-14TP	429-31 421-31A	429-21
435-80	100-14TT	435-31 435-31A	435-21
437-80	100-14TS	437-31 437-31A	437-21
450-80	100-14TU	450-31 450-31A	450-21
450-80B			450-21B
451-80	***	***	451-21

REFERENCE GUIDE

A handy guide for you to use when looking for the crimping fixture needed for a High Speed CV Joint or Boot Kit. Use it for finding what Boot Kit is used for a CV Joint or even when you want to know what spline to use when making a driveshaft assembly.



High Speed CV Joint Kits	Crimping Fixtures	Replacement Splines	High Speed CV Boot Kits
452-80	100-14TV	452-31 452-31A	452-21
454-80	100-14TW	454-31	454-21
456-80	***	***	456-21
456-80B	***	***	456-21B
457-80	***	457-31 457-31A	457-21
457-80B	***	457-31B 457-31C	457-21B
471-80			471-21
475-80			***
476-80			***
477-80			***
***	100-14TN	***	804-21
***	***	***	804-21C
***	***	***	805-21A
***	***	***	808-21A

Manufacturer of Driveline Components
1500 11th Avenue Rockford, Illinois 61104
Phone (815) 962-1411 Fax (815) 965-4857